

Combines Fujifilm's  
"Core DR Technologies"

High sensitivity detector



ES Panel (CSI)  
Patented ISS  
Advanced Noise Reduction Circuitry



Virtual Grid



Dynamic  
Visualization II



Refined image processing

Compact  
design  
+  
Integrated  
DR  
+  
Mobile X-ray  
Cart  
+  
Mono-tube  
generator



**FDR AQRO**



# Mini mobile DR

- Ultralight compact design 2.5kW system
- High sensitivity DR technology
- Refined image processing advancements

## Compact Integrated Mobile DR

- Articulating integrated control panel (FDX & Gen console)
  - **easy viewing from any angle**
- 2-way SpeedLink
  - **exposure optimization & feedback**
- Hydro AG kills germs on primary surfaces (console, hand switch, FPD)

**FDR AQRO**



# Mini mobile DR

FDR AQRO

- Cord free tube arm, no wires, light easy to move
  - **Clean Design, easy to clean (NICU, ICU, OR)**
- Tilting Detector storage: **bagging & built in charging**
- Ultra-light & compact generator (2.5kW) & tube head
  - LED collimator, illuminates with use of knobs
- Lithium ion battery power up to **12 hrs/200 exps**
  - Quick charge **15min/1hr & plug in use**



# FDR AQRO



**15cm**  **31cm**  
90kV, 0.8mAs 100kV, 2mAs

FDR AQRO

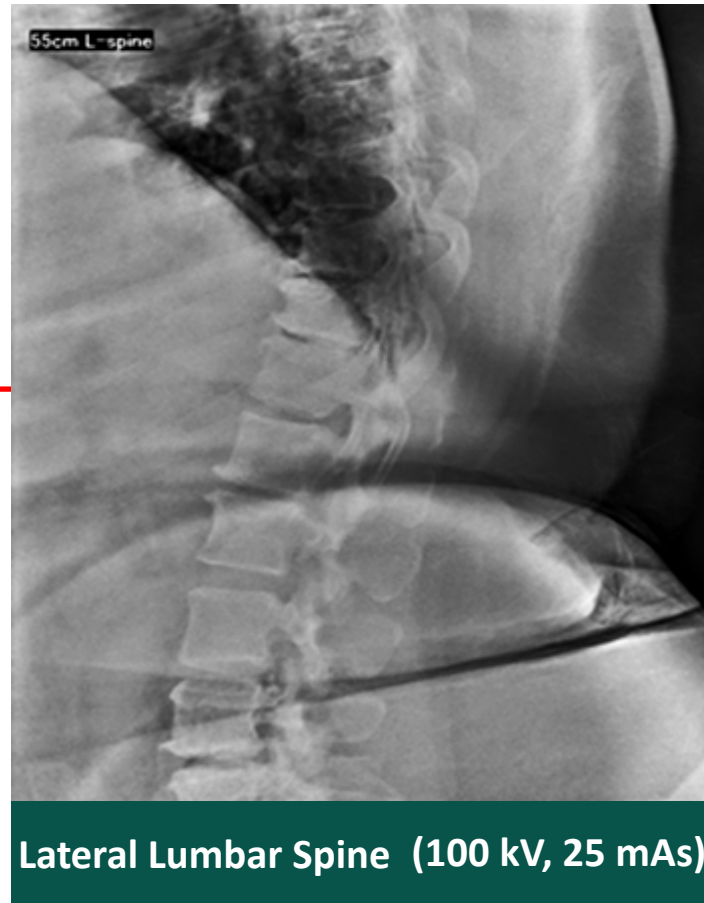
+



+



+



Lateral Lumbar Spine (100 kV, 25 mAs)



## Key Points

- Ultralight compact design 2.5kW system
  - High sensitivity DR technology
  - Refined image processing advancements
  - Can be wheeled between rooms
- 
- Ideal for Urgent Care
  - Pediatrics
  - Sports Team
  - Mobile DR

